

# GAS FIRED WATER BOILER MGB-K CAST IRON



## 84% AFUE EFFICIENCY

The MGB-K is a gas-fired boiler with quiet and highly efficient operation. It's energy saving features include the electronic ignition system and motorized vent damper.

The internal Hydrolevel control adjusts the water temperature based on your heating system demand which further reduces heating costs. The Built-in low water cutoff (LWCO) protects the boiler from potentially dangerous low water levels.

The MGB-K offers more installation flexibility with water and gas piping options available out the left or right sides of the boiler.

2021 DOE (Department of Energy) Standard Compliant.

7 Models available offering inputs from 59 - 235 MBH.

## MGB-K FEATURES

- **Proven Cast Iron Heat Exchanger Design**  
Features a dependable cast iron heat exchanger with dry leg end sections.
- **Easy to Service Burners**  
Features a pull-out burner drawer and removable burner tube tray for quick access for service.
- **Easy to Install Low Profile Draft Diverter**  
Reduces installation height by up to 30" when compared to models with external draft diverter hoods.
- **20 Year Non-Prorated Limited Warranty**  
(Residential)
- **Built by American Craftsmen**



MGB-060K Pictured

# INSTALLATION SERVICE

## Easier to Install

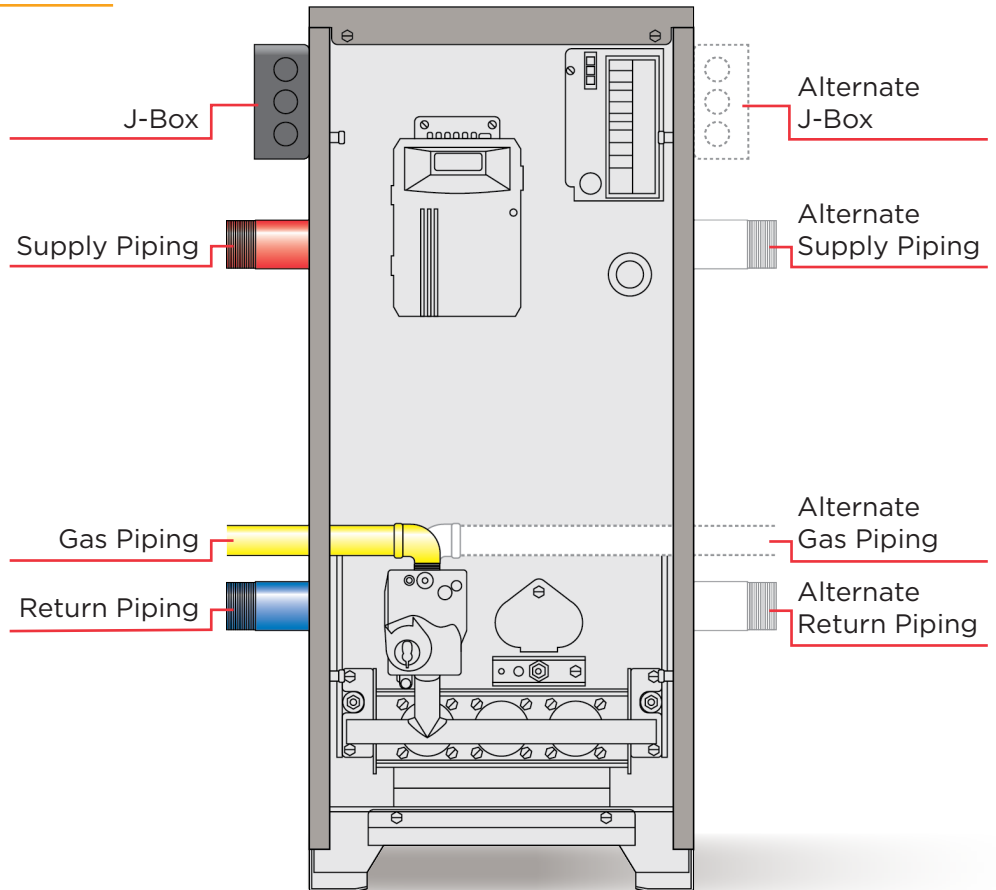
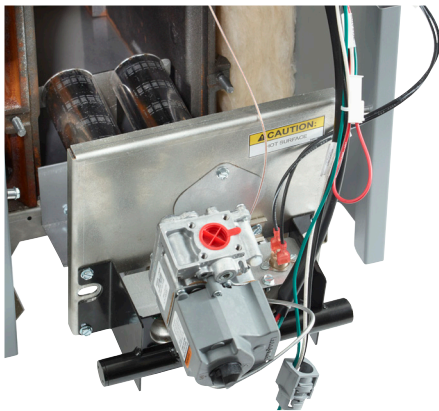
Access on either side for Water, Gas, and Electrical connections.

Low Profile Integrated Draft Hood

## Easier to Service

Easy Front Panel Access

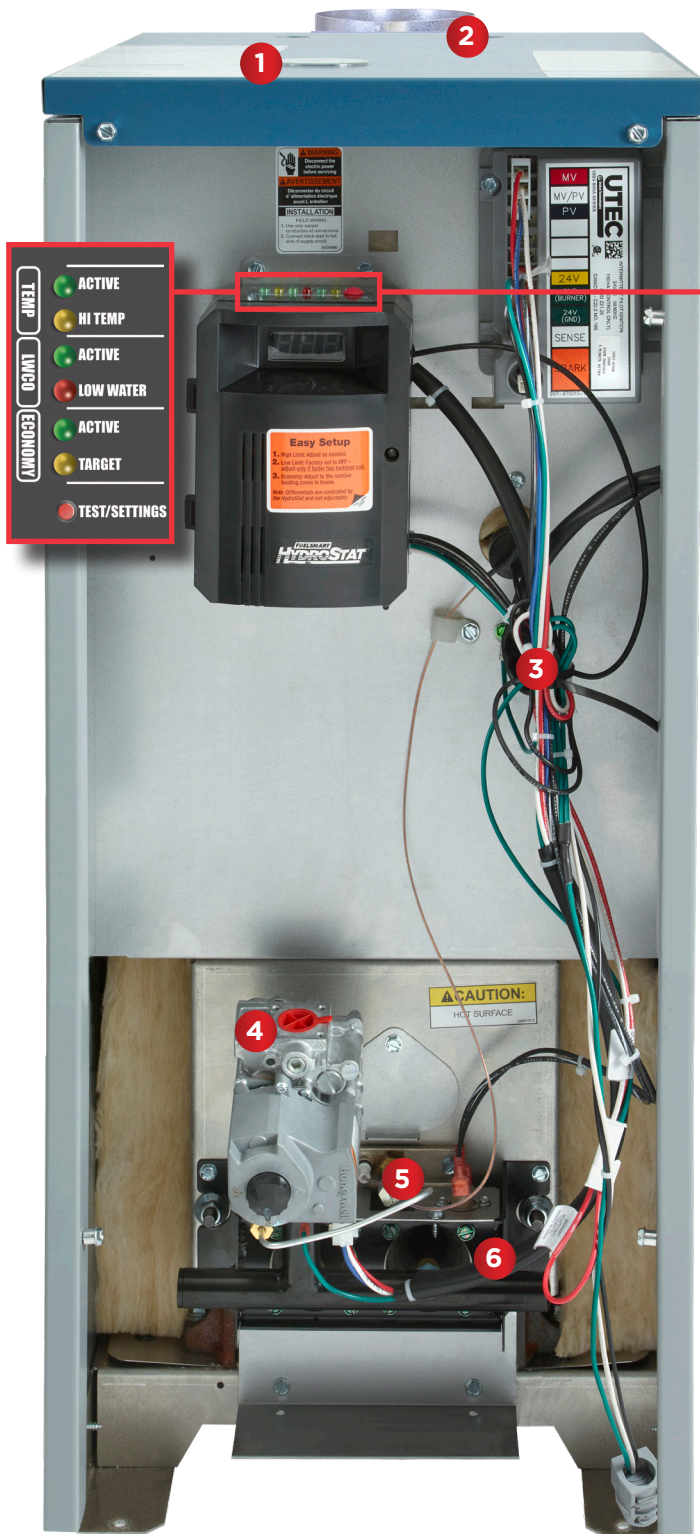
Pull-out Burner Drawer and Tray



# INCLUDED PARTS & ACCESSORIES



- Drain Valve
- Relief Valve, 30 psi
- Pipe Nipples
- Reducing Couplings
- Bushings
- T&P Gauge
- J-Box
- Close Nipple
- 90 Elbow
- Tee
- Circulator Harness



Dry Leg Casting

## A CLOSER LOOK MGB-K

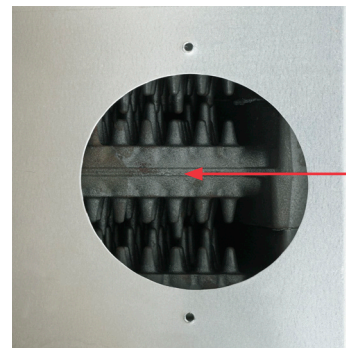
### Internal Hydrolevel Operating Control

View port on top allows visibility of diagnostic indicator lights.

Control adjusts the water temperature based on the heating system demand to reduce your heating costs.

Built-in Low Water Cutoff (LWCO) protects the boiler from potentially dangerous low water conditions.

### Top Panel Access for Draft Hood Installation



A removable cover allows for easy inspection of the heat exchanger.

1. View Port
2. Flue Connector
3. Internal Wire Harness
4. Gas Valve
5. Flame Sensor/Ignitor
6. Burner Tube Tray

## EXCEPTIONAL SUPPORT

When it comes to **support**, Utica Boilers offers service that's **beyond compare**. Our **US-based** support team is here for you AND your customers.

Our **Dealer Portal** offers a variety of resources, including tutorial videos and product documentation to help you every step of the way, from installation to maintenance and repair.

Visit [www.UticaDealer.com](http://www.UticaDealer.com) to request a **FREE** account.



## RATINGS

### AHRI CERTIFIED RATINGS

### DIMENSIONS

MODEL	Input MBH <sup>(1)</sup>	Heating Capacity MBH <sup>(1)</sup>	Net Water MBH <sup>(2)</sup>	Efficiency AFUE	Water content Gallons	Number Burners	- A - Width	- B - Height	- C - Depth	Ship Weight
MGB-060K	59	50	43	84%	1.9	2	13-3/8"	32-1/8"	26"	215 lbs.
MGB-095K	92.5	78	68	84%	2.3	3	13-1/2"	32-1/8"	26"	250 lbs.
MGB-120K	120	101	88	84%	2.8	4	16-1/4"	32-1/8"	26"	295 lbs.
MGB-150K	149	125	109	84%	3.2	5	19"	32-1/8"	26"	335 lbs.
MGB-175K	175	147	128	84%	3.7	6	21-7/8"	32-1/8"	26"	385 lbs.
MGB-205K	205	172	150	84%	4.1	7	27-1/2"	32-1/8"	26"	420 lbs.
MGB-235K	235	197	171	84%	4.6	8	27-1/2"	32-1/8"	26"	465 lbs.

(1) Input rating for sea level to 2,000 ft. (610m) above sea level. United States, over 2000 ft (610m) above sea level. Reduce input rate 4% for every 1000 ft (304m) above sea level.

(2) Net AHRI Water Rating shown based on piping and pickup allowance of 1.15. Consult manufacturer before selecting boilers for installation having unusual piping and pickup requirements, such as intermittent system operation, extensive piping systems, etc.

For forced hot water systems where boiler and all piping within area to be heated, boiler may be selected on basis of its heating capacity.

### CONNECTIONS

Water Return/Supply: 1 1/4" NPT      Gas Inlet: 3/4" NPT (1" NPT on MGB-235K)

### ELECTRICAL

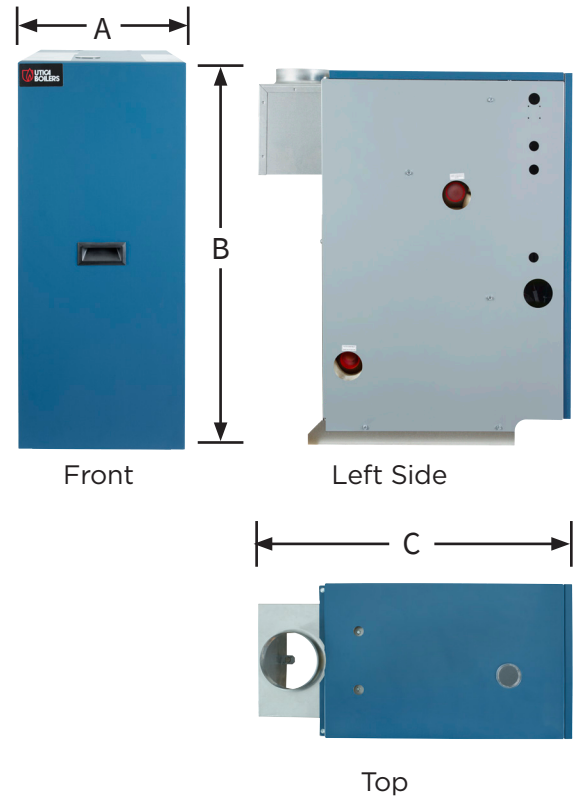
120 Volts AC, 60 hertz, 1 phase, less than 12 amps (15 amp circuit recommended)

### STANDARD EQUIPMENT

Boiler Jacket  
 Parts Box: Drain Valve, 30 psi Relief Valve, Pipe Nipples, Reducing Couplings, Bushings, T&P Gauge, J-Box, Close Nipple, Tee, Circulator Harness.  
 Damper, Draft Hood

### OPTIONS

Taco ECM Pump, Grundfos Pump, High Altitude Orifice Kits, LP & Natural Gas Conversion Kits



ECR International, Inc. 2201 Dwyer Avenue, Utica, NY 13501  
 Tel. 800 253 7900  
 www.ecrinternational.com



All specifications subject to change without notice.  
 ©2020 ECR International, Inc.  
 PN 240013193 Rev. [12/21/20]