



EFFICIENT AND FLEXIBLE TO FIT YOUR LIFESTYLE

SINGLE-ZONE 230V

- **4 INDOOR UNITS TO CHOOSE**
- HIGH EFFICIENCY, UP TO 25.3 SEER / 11.5 HSPF
- **AUTO-CLEAN FUNCTION**
- SUB-ZERO COOLING CAPABILITIES

ELEVATE THE ATMOSPHERE IN ANY ROOM

The Energy Star® - compliant Vireo GEN3 brings high performance, efficiency and flexibility to every room. With a wide operating temperature range, sub-zero cooling capabilities and compatibility with four indoor unit options, it has never been easier to maintain an optimal indoor environment, regardless of outdoor conditions.



MODEL		3VIR09HP230V1AO	3VIR12HP230V1AO	3VIR18HP230V1AO	3VIR24HP230V1AO
System Type		HEAT PUMP			
SYSTEM PERFORMANCE		SEE INDIVIDUAL INDOOR UNIT DATA TABLES			
Energy Star®		SEE INDIVIDUAL INDOOR UNIT DATA TABLES			
OUTDOOR UNIT					
Cooling Temperature Range	*F	-20 - 122	-20 - 122	-20 - 122	-20 - 122
Heating Temperature Range	*F	-22 - 86	-22 - 86	-22 - 86	-22 - 86
Compressor Type		G-10 / 1 - Stage Inverter			
Sound Pressure Level (Cooling & Heating)	dB(A)	52	52	57	59
Unit Dimension (WxHxD)	in	33 3/8 x 23 1/2 x 12 x 5/8	35 3/8 x 23 1/2 x 14 3/4	38 x 27 5/8 x 15 5/8	39 1/2 x 31 1/8 x 16 3/4
Package Dimension (WxHxD)	in	34 3/4 x 25 3/8 x 14 1/4	37 1/3 x 25 3/8 x 16 1/2	40 1/2 x 25 3/8 x 18 1/16	42 5/8 x 33 5/8 x 19 1/4
Weight (Net / Gross)	lbs	73.9 / 80.5	83.8 / 90.4	103.6 / 113.6	124.6 / 135.6
Refrigerant Charge - R410A	oz	36.3	47.3	56.4	63.5
Coil Type		Aluminum Fin / Copper Tube			
REFRIGERANT PIPING					
Line Set Size (Liquid - Gas)	in	Size line set by indoor unit port sizes			
Pre-Charge Length	ft	25			
Pipe Length (Min / Max)	ft	10 / 49	10 / 66	10 / 98	10 / 98
Max. Pipe Elevation	ft	33 / 49	33 / 66	66 / 98	66 / 98
ELECTRICAL					
Power Supply		208-230V / 1Ph / 60Hz			
Rated Current Cooling	amps	3.0	4.0	6	7.5
Rated Current Heating	amps	7.2	7.5	12	14.5
MCA	amps	9	10	15	16
MOCP	amps	15	15	20	25
Main Power Wire Size	AWG	Per Local Code			
Communication Wire Size	AWG	14 / 4			
LIMITED WARRANTY		5 Years Parts and Compressor - Residential			

4 INDOOR UNITS TO CHOOSE

- Wall Mount
- Ceiling Cassette
- Universal Floor/Ceiling
- Slim Duct (High Static)



Slim compact design hangs inconspicuously on the wall and mixes with most interior designs. Built-in WiFi technology allows local to long distance control from smartphones with the GREE+ smart app.

WALL MOUNT

MODEL		3VIR09HP230V1AH	3VIR12HP230V1AH	3VIR18HP230V1AH	3VIR24HP230V1AH
System Type		HEAT PUMP			
SYSTEM PERFORMANCE (Non-Ducted Indoor Units)					
Cooling Capacity (Min-Max)	Btu/h	9100 (2457 - 10748)	12000 (3071 - 14100)	18000 (5118 - 23202)	22000 (3400 - 28500)
Heating Capacity (Min-Max)	Btu/h	11000 (2593 - 13307)	12000 (3071 - 15500)	18200 (5800 - 23543)	24000 (4300 - 33600)
SEER / EER		25.3 / 14.7	25 / 13	23 / 13	23 / 13
HSPF / COP		11.2 / 3.75	11.5 / 3.61	11 / 3.65	11 / 3.81
Energy Star®		YES			
Air flow (Min-Max)	CFM	194 - 353	230 - 400	353 - 618	400 - 824
Sound Pressure Level (Min-Max)	dB(A)	25 - 40	27 - 43	31 - 46	35 - 53
Dehumidification	pt/hr	1.70	3	3.8	5.1
Condensate Drain Size (OD)	in	5 / 8	5 / 8	5 / 8	5 / 8
Unit Dimension (WxHxD)	in	32 1/2 x 11 1/2 x 7 3/4	32 1/2 x 11 1/2 x 7 3/4	38 5/8 x 12 1/4 x 8 3/4	42 5/8 x 13 1/8 x 9 3/4
Package Dimension (WxHxD)	in	34 1/4 x 13 3/4 x 10 1/8	34 1/4 x 13 3/4 x 10 1/8	40 7/8 x 14 7/8 x 11 5/16	44 7/16 x 16 x 12 3/4
Weight (Net / Gross)	lbs	21 / 25.4	21 / 25.4	30 / 35.3	35.3 / 42
Line Set Size (Liquid - Gas)	in	1/4 - 3/8	1/4 - 1/2	1/4 - 5/8	1/4 - 5/8
Power Supply		208-230V / 1Ph / 60Hz (Powered by the Outdoor Unit)			
LIMITED WARRANTY		5 Years Parts - Residential			



Suitable for any room; installs easily in suspended ceilings.

CEILING CASSETTE

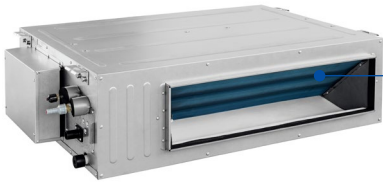
MODEL		CAS12HP230V1BC	CAS18HP230V1BC	CAS24HP230V1BC
System Type		HEAT PUMP		
SYSTEM PERFORMANCE (Non-Ducted Indoor Units)				
Cooling Capacity (Min-Max)	Btu/h	12000 (900 - 14100)	18000 (5100 - 23200)	22000 (3600 - 26500)
Heating Capacity (Min-Max)	Btu/h	12000 (900 - 15500)	18200 (5800 - 23500)	24000 (4000 - 33000)
SEER / EER		24 / 13	20 / 10.25	21 / 12
HSPF / COP		11.3 / 4.0	10 / 2.96	11.5 / 3.81
Energy Star®		YES	NO	NO
Air flow (Min-Max)	CFM	265 - 383	265 - 418	518 - 753
Sound Pressure Level	dB(A)	34 - 44	35 - 47	36 - 47
Dehumidification	pt/hr	2.96	3.80	5.3
Condensate Drain Size (OD)	in	1	1	1
Unit Dimension (WxHxD)	in	23 1/2 x 23 1/2 x 9 1/2	23 1/2 x 23 1/2 x 9 1/2	33 x 33 x 9 1/2
Package Dimension (WxHxD)	in	30 1/2 x 29 x 11 1/4	30 1/2 x 29 x 11 1/4	37 1/2 x 37 1/2 x 12 1/8
Weight (Net / Gross)	lbs	44 / 53	44 / 53	57.3 / 70.5
Line Set Size (Liquid - Gas)	in	1/4 - 3/8	1/4 - 1/2	3/8 - 5/8
Power Supply		208-230V / 1Ph / 60Hz (Powered by the Outdoor Unit)		
LIMITED WARRANTY		5 Years Parts - Residential		
CASSETTE GRILLE (Required)		CASGRILLEBSM	CASGRILLEBSM	CASGRILLEBLG
Grille Dimension (WxHxD)	in	26 3/8 x 26 3/8 x 2	26 3/8 x 26 3/8 x 2	37 7/16 x 37 7/16 x 2 3/8
Package Dimension (WxHxD)	in	30 X 30 X 3 1/2	30 X 30 X 3 1/2	40 1/2 x 40 3/4 x 4 5/8
Weight (Net / Gross)	lbs	7.7 / 11	7.7 / 11	15.4 / 24.25



Slender, lightweight and attractive; ideal for limited spaces.
Suspend from ceiling or mount low on wall.

UNIVERSAL FLOOR/CEILING

MODEL		FLR09HP230V1BF	FLR12HP230V1BF	FLR18HP230V1BF	FLR24HP230V1BF
System Type		HEAT PUMP			
SYSTEM PERFORMANCE (Non-Ducted Indoor Units)					
Cooling Capacity (Min-Max)	Btu/h	9100 (2450 - 13300)	12000 (900 - 14100)	18000 (5100 - 21154)	22000 (3600 - 26500)
Heating Capacity (Min-Max)	Btu/h	11000 (2590 - 13300)	12000 (900 - 15500)	18200 (5800 - 21495)	24000 (4000 - 33000)
SEER / EER		19.5 / 13.3	19.6 / 12.5	15 / 10.25	20 / 12
HSPF / COP		11.2 / 3.75	10.5 / 3.5	8.5 / 2.6	10 / 3.3
Energy Star®		YES	YES	NO	NO
Air flow (Min-Max)	CFM	257 - 412	257 - 412	241 - 400	424 - 560
Sound Pressure Level (Min-Max)	dB(A)	26 - 38	26 - 38	27 - 38	27 - 38
Dehumidification	pt/hr	1.7	3	3.8	5.3
Condensate Drain Size	in	11/16	11/16	11/16	11/16
Unit Dimension (WxHxD)	in	34 1/4 x 26 1/4 x 9 1/4	34 1/4 x 26 1/4 x 9 1/4	34 1/4 x 26 1/4 x 9 1/4	47 1/4 x 26 1/4 x 9 1/4
Package Dimension (WxHxD)	in	40 1/2 x 30 1/4 x 11 1/4	40 1/2 x 30 1/4 x 11 1/4	40 1/2 x 30 1/4 x 11 1/4	53 1/2 x 30 1/4 x 11 1/4
Weight (Net / Gross)	lbs	55 / 66.2	55 / 66.2	66.3 / 67.3	72.8 / 88.2
Line Set Size (Liquid - Gas)	in	1/4 - 3/8	1/4 - 1/2	1/4 - 1/2	3/8 - 5/8
Power Supply		208-230V / 1Ph / 60Hz (Powered by the Outdoor Unit)			
LIMITED WARRANTY		5 Years Parts - Residential			



Hides above suspended ceiling or in closet space; delivers air via ducting or suitable ceiling /wall grilles.

SLIM DUCT (HIGH STATIC)

MODEL		DUCT09HP230V1BD	DUCT12HP230V1BD	DUCT18HP230V1BD	DUCT24HP230V1BD
System Type		HEAT PUMP			
SYSTEM PERFORMANCE (Ducted Indoor Units)					
Cooling Capacity (Min-Max)	Btu/h	9100 (2450 - 13300)	12000 (900 - 14100)	18000 (5118 - 23202)	22000 (3200 - 28000)
Heating Capacity (Min-Max)	Btu/h	11000(2590 - 13300)	12000 (900 - 15500)	18200 (5800 - 23543)	24000 (4000 - 29000)
SEER / EER		21 / 14.2	20.5 / 11.8	15.2 / 8.85	20 / 12.5
HSPF / COP		11.2 / 3.74	10.6 / 3.78	9.7 / 3.18	10 / 3.81
Energy Star®		YES	NO	NO	YES
Air flow (Min-Max)	CFM	188 - 324	212 / 353	288 / 589	406 / 736
External Static Pressure	In W.c.	0.6	0.6	0.8	0.8
Sound Pressure Level	dB(A)	25 - 36	26 - 38	26 - 39	28 - 42
Dehumidification	pt/hr	1.70	3	3.8	5.3
Condensate Drain Size	in	1	1	1	1
Unit Dimension (WxHxD)	in	32 11/16 x 29 11/16 x 11 7/8	32 11/16 x 29 11/16 x 11 7/8	44 1/2 x 29 3/4 x 11 7/8	44 1/2 x 29 3/4 x 11 7/8
Package Dimension (WxHxD)	in	35 1/4 x 31 3/4 x 13 5/8	35 1/4 x 31 3/4 x 13 5/8	47 5/16 x 32 x 13 5/8	47 5/16 x 32 x 13 5/8
Weight (Net / Gross)	lbs	71 / 84	71 / 84	93 / 107	93 / 107
Line Set Size (Liquid - Gas)	in	1/4 - 3/8	1/4 - 1/2	3/8 - 5/8	3/8 - 5/8
Power Supply		208-230V / 1Ph / 60Hz (Powered by the Outdoor Unit)			
LIMITED WARRANTY		5 Years Parts - Residential			