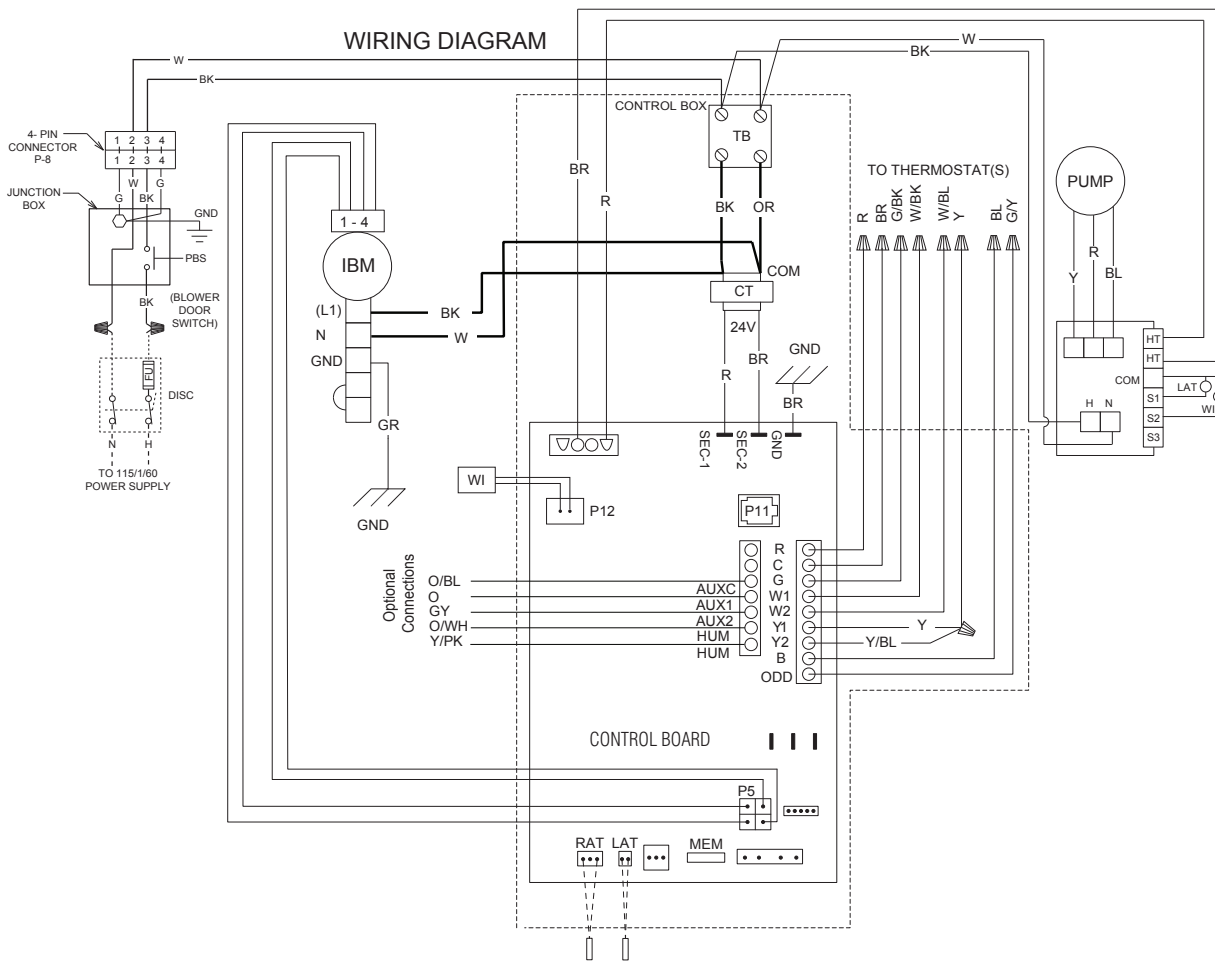
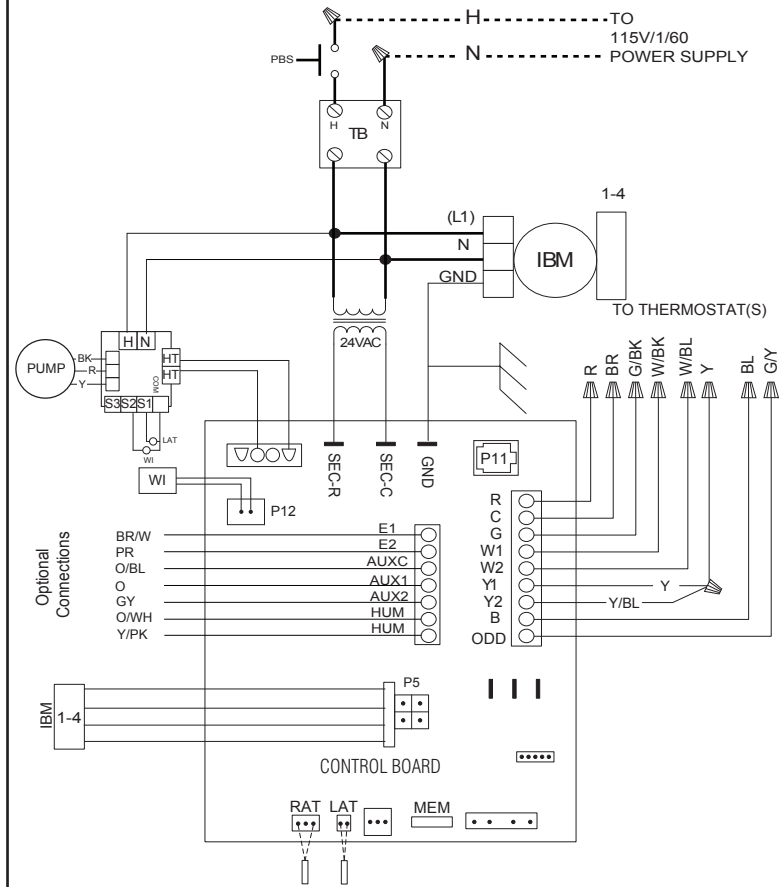


WIRING DIAGRAM



SCHEMATIC DIAGRAM



WIRING INFORMATION

- LINE VOLTAGE
 -FACTORY STANDARD _____
 -FACTORY OPTION - - - - -
 -FIELD INSTALLED - - - - -
- LOW VOLTAGE
 -FACTORY STANDARD _____
 -FIELD INSTALLED - - - - -

REPLACEMENT WIRE
 -MUST BE THE SAME SIZE AND TYPE OF INSULATION AS ORIGINAL (105C. MIN.)

WARNING
 -CABINET MUST BE PERMANENTLY GROUNDED AND CONFORM TO I.E.C., N.E.C., C.E.C., NATIONAL WIRING REGULATIONS, AND LOCAL CODES AS APPLICABLE.

NOTES

- CONNECT SUPPLY WIRING FOR VOLTAGE, PHASE AND HERTZ SHOWN ON RATING PLATE.
- SUPPLY WIRE MUST BE RATED AT 75°C MIN. SEE INSTRUCTIONS FOR SIZE.
- CT FACTORY WIRED FOR 240V. MOVE WIRES FROM 240V TO 208V FOR 208V OPERATION.
- FOR USE WITH COPPER CONDUCTORS ONLY.
- FOR 2-STAGE COOLING OR HEAT PUMP OPERATION, SEPARATE THE YELLOW AND YELLOW/BLUE THERMOSTAT PIGTAILS INSIDE CABINET AND CONNECT TO THE Y1 AND Y2 INPUTS FROM A 2-STAGE THERMOSTAT.

COMPONENT CODES

- CT..... CONTROL TRANSFORMER.
 E1..... COMM POS.
 E2..... COMM. REF.
 GND..... GROUND.
 IBM..... INDOOR BLOWER MOTOR.
 LAT..... TERMINAL BLOCK.
 MEM..... MEMORY CARD.
 OST..... VAPOR LINE THERMISTOR CONN.
 P5..... COMM. MTR. CONNECT.
 P11..... RJ 14 COM TAP.
 PBS..... PUSH BUTTON SWITCH.
 TB..... LEAVING AIR TEMP.
 RAT..... RET. AIR TEMP.
 SEC-2..... 24V AC COMMON.
 SEC-1..... 24V AC.
 WI..... WATER INLET TEMP.
..... WIRE NUT.

WIRE COLOR CODE

- BK.....BLACK G.....GREEN PR.....PURPLE
 BR.....BROWN GY.....GRAY R.....RED
 BL.....BLUE O.....ORANGE W.....WHITE
 PK.....PINK Y.....YELLOW

ELECTRICAL WIRING DIAGRAM

HYDRONIC AIR HANDLER
 VARIABLE SPEED

APPROVED:	CHECKED:	ORIGINAL RELEASE NO.:
MODELED BY: CRS	DATE: 10-27-16	H-1025S031
PART NO.: 90-103346-08		REV: 02