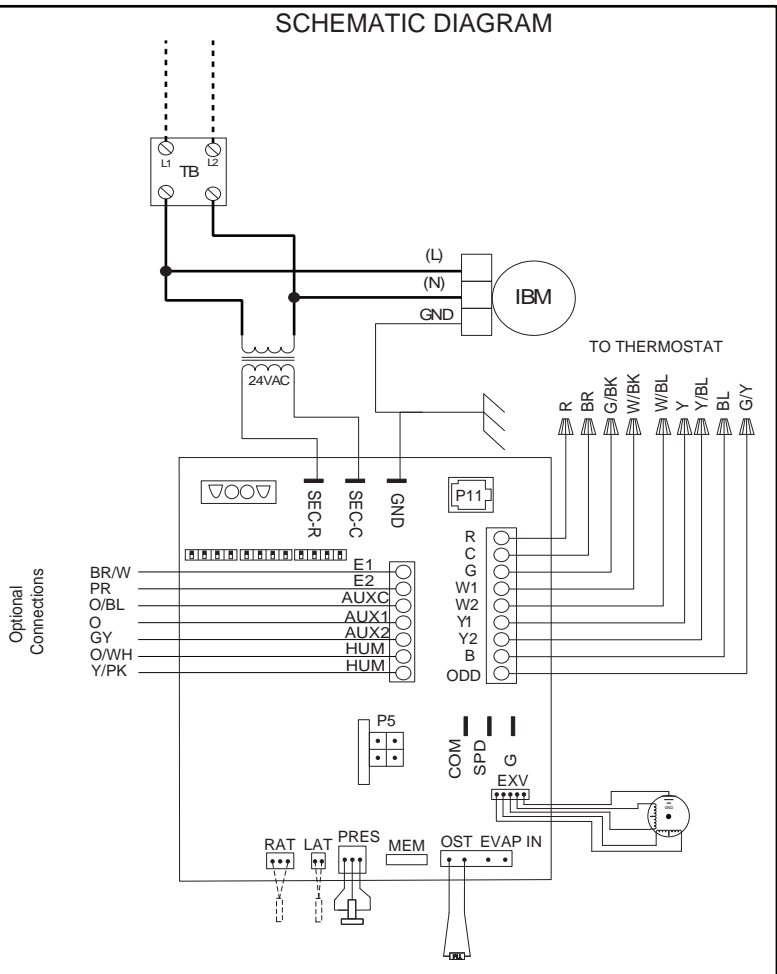


SPEED TAP TABLE

TONS	Y1 or Y2	LOW STATIC	HIGH STATIC
2TON	Y1	T2	T4
2STG	Y2	T3	T5
2TON	Y1	T1	T1
INVERTER	Y2	T3	T5
3TON	Y1	T2	T4
2STG	Y2	T3	T5
3TON	Y1	T1	T1
INVERTER	Y2	T3	T5
4TON	Y1	T2	T4
2STG	Y2	T3	T5
4TON	Y1	T1	T1
INVERTER	Y2	T3	T5
5TON	Y1	T2	T4
2STG	Y2	T3	T5
5TON	Y1	T1	T1
INVERTER	Y2	T3	T5



WIRING INFORMATION

LINE VOLTAGE
 -FACTORY STANDARD —————
 -FACTORY OPTION - - - - -
 -FIELD INSTALLED ······

LOW VOLTAGE
 -FACTORY STANDARD - - - - -
 -FIELD INSTALLED ······

REPLACEMENT WIRE
 -MUST BE THE SAME SIZE AND TYPE OF INSULATION AS ORIGINAL (105C. MIN.)

WARNING
 -CABINET MUST BE PERMANENTLY GROUNDED AND CONFORM TO I.E.C., N.E.C., C.E.C., NATIONAL WIRING REGULATIONS, AND LOCAL CODES AS APPLICABLE.

- #### NOTES
1. CONNECT SUPPLY WIRING FOR VOLTAGE, PHASE AND HERTZ SHOWN ON RATING PLATE.
 2. SUPPLY WIRE MUST BE RATED AT 75°C MIN. SEE INSTRUCTIONS FOR SIZE.
 3. CT FACTORY WIRED FOR 240V. MOVE WIRES FROM 240V TO 208V FOR 208V OPERATION.
 4. CONTROL WIRING TO THERMOSTAT.
 5. BLOWER SPEED SELECT(YL WIRE Y1) IS FACTORY WIRED TO HIGH SPEED STATIC SPEED TAB T4, AND THE (BL WIRE Y2) IS WIRED TO HIGH STATIC SPEED TAB T5. (SEE SPEED TAP TABLE FOR ALTERNATE CONFIGURATION.
 6. FOR USE WITH COPPER CONDUCTORS ONLY.
 7. WHEN USING 13KW AND HIGHER IT IS RECOMMENDED TO JUMP W1 AN W2 TOGETHER FOR MAXIMUM TEMPERATURE RISE.

- #### COMPONENT CODES
- CT.....CONTROL TRANSFORMER
 GND.....GROUND
 IBM.....INDOOR BLOWER MOTOR
 TB.....TERMINAL BLOCK
 WIRE NUT
 ELEC. EX VALVE
 ELEC. EX THERMISTOR
 RET. AIR TEMP.
 LEAVING AIR TEMP.
 COIL TEMP CONN.
 RJ 14 COM TAP
 COMM. MTR. CONNECT.
 PRESSURE TRANSDUCER
 2ND STAGE A.F. TAP
 24V AC COMM.
 24V AC
 1ST STAGE OR FAN ONLY A.F. TAP
 COMM POS.
 COMM. REF.

WIRE COLOR CODE

BK.....BLACK	G.....GREEN	PR.....PURPLE
BR.....BROWN	GY.....GRAY	R.....RED
BL.....BLUE	O.....ORANGE	W.....WHITE
PK.....PINK	Y.....YELLOW	

ELECTRICAL WIRING DIAGRAM

2 STAGE ECONET AIR HANDLER CONTROL

APPROVED:	CHECKED:	ORIGINAL RELEASE NO.:
MODELED BY: JHB	DATE: 10-21-14	H-1029S000
PART NO.: 90-101897-07		REV: 03