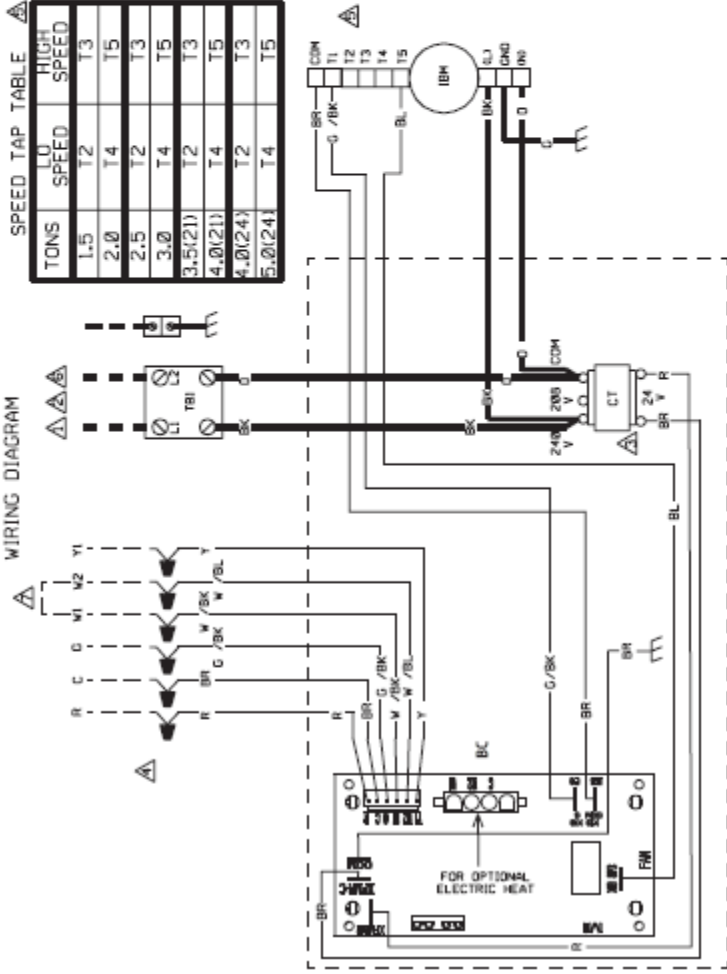


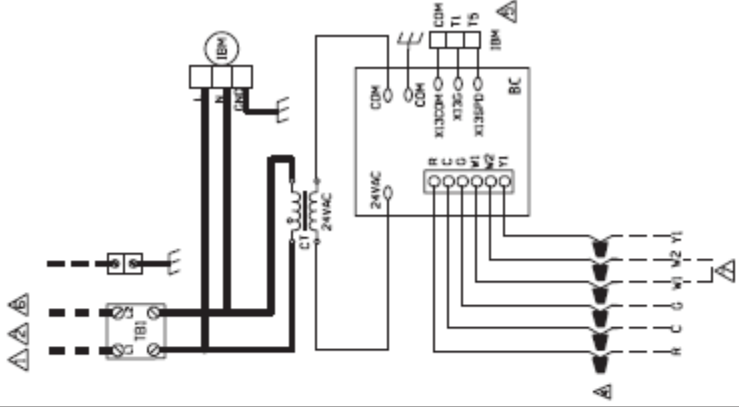
WIRING DIAGRAM

SPEED TAP TABLE

TONS	LO SPEED	HIGH SPEED
1.5	T2	T3
2.0	T4	T5
2.5	T2	T3
3.0	T4	T5
3.5(21)	T2	T3
4.0(21)	T4	T5
4.0(24)	T2	T3
5.0(24)	T4	T5



SCHEMATIC DIAGRAM



WIRE COLOR CODE
 BK.....BLACK G.....GREEN PR.....PURPLE
 BR.....BROWN GR.....GRAY R.....RED
 BL.....BLUE O.....ORANGE W.....WHITE
 Y.....YELLOW

ELECTRICAL WIRING DIAGRAM
ELECTRICAL AIR HANDLER
208/240V CONSTANT TORQUE MOTOR

DR. BY **MGR** DWG. NO. **90-101897-01** REV. **10**

WIRING INFORMATION

- LINE VOLTAGE -----
- FACTORY STANDARD -----
- FACTORY OPTION -----
- FIELD INSTALLED -----
- LOW VOLTAGE -----
- FIELD STANDARD -----
- FIELD INSTALLED -----
- REPLACEMENT WIRE -----
- MUST BE THE SAME SIZE AND TYPE -----
- OF INSULATION AS ORIGINAL (105C. MIN)
- WARNING -----
- CABINET MUST BE PERMANENTLY GROUNDED -----
- AND CONFORM TO I.E.C. N.E.C. C.E.C. -----
- NATIONAL WIRING REGULATIONS, AND LOCAL -----
- CODES AS APPLICABLE -----

COMPONENT CODES

- BC BLOWER CONTROL
- CT CONTROL TRANSFORMER
- GND GROUND
- IBM INDOOR BLOWER MOTOR
- T6 TERMINAL BLOCK (H VOLT)
- ▲ WIRE NUT

NOTES

- ▲ CONNECT SUPPLY WIRING FOR VOLTAGE, PHASE AND HERTZ SHOWN ON RATING PLATE.
- ▲ SUPPLY WIRE MUST BE RATED AT 75°C MIN. SEE INSTRUCTIONS FOR SIZE.
- ▲ CT FACTORY WIRED FOR 240 VOLTS. MOVE WIRES FROM 240V TO 288V FOR 288V OPERATION.
- ▲ CONTROL WIRING TO THERMOSTAT.
- ▲ BLOWER SPEED SELECT (BL WIRE) IS FACTORY WIRED TO FULL TONNAGE HIGH SPEED (H6 T5, EXCEPT FOR 4-TON IN 24" WIDE CABINET. 4-TON 24" IS FACTORY WIRED TO T3. (SEE SPEED TAP TABLE FOR ALTERNATE CONFIGURATION)
- ▲ FOR USE WITH COPPER CONDUCTORS ONLY.
- ▲ WHEN USING 13KW AND HIGHER IT IS RECOMMENDED TO JUMP W1 AND W2 TOGETHER FOR MAXIMUM TEMPERATURE RISE.